

NEWSLETTER



Greetings Kamcare friend.

We would like to share our news from the last few months with you.

GROEN KAMEELPERD

Since December Kamcare has been running a secondhand or 'thrift' shop on its premises where you are able to buy anything from books, clothing, nursery equipment, toys, sports equipment, and kitchenware to stationery. The shop's entrance is next to the stage in the NG Familiekerk church hall. We are open Monday to Friday 8:00-13:00 and Sunday 8.30-11.30. We invite you to visit the shop. There are surprising hidden treasures to be found and the prices are more than reasonable. Donations are also very welcome. Kamcare uses the shop to raise funds to run it's organisation and invites you to visit the Groen Kameelperd.

Alwine has also set up an online shop on the platform Yaga. Here you can find amongst other things books, puzzles and games. Visit us online to find wonderful bargains.

Contact Alwine on 0845858594 or Liezel on 072 150 3994.

The graphic is titled "VISIT KAMCARE'S ONLINE SHOP" and features a QR code labeled "SCAN ME". It includes instructions to download the "yaga" app from Google Play or the App Store, with the URL "HTTPS://WWW.YAGA.CO.ZA/KAMCARE". A four-step process is outlined: 1. INSTALL THE 'YAGA' APP, 2. VISIT THE KAMCARE SHOP AND CHOOSE YOUR PRODUCT, 3. CLICK 'BUY' AND SELECT THE 'PICK UP FROM SELLER' OPTION, 4. COME PICK UP YOUR PRODUCT AT OUR SHOP. A promotion code "GROENKAMEELPERD" is provided for a discount.

USE PROMOTION CODE 'GROENKAMEELPERD' FOR A DISCOUNT

1. INSTALL THE 'YAGA' APP
2. VISIT THE KAMCARE SHOP AND CHOOSE YOUR PRODUCT
3. CLICK 'BUY' AND SELECT THE 'PICK UP FROM SELLER' OPTION
4. COME PICK UP YOUR PRODUCT AT OUR SHOP

The graphic features the Groen Kameelperd logo and the text "TRADING Hours". It lists the trading hours for each day of the week.

TRADING Hours

MONDAY	8AM-1PM
TUESDAY	8AM-1PM
WEDNESDAY	8AM-1PM
THURSDAY	8AM-1PM
FRIDAY	8AM-1PM
SATERDAY	GLOSED
SUNDAY	08:30AM-11:3AM

March 2024

VEGETABLE GARDEN TRAINING

In order to promote business skills and self care in the community, Kamcare offers vegetable garden training in our vegetable garden. During February PTOPS and Willa Krause sent some of their staff to attend the training. It was a great educational day and everyone was motivated to begin a vegetable garden at home in order to begin providing for their families in this way.



CAREER GUIDANCE

Errin van Tonder is a doctoral student at Tukkies who, as part of her thesis, is running a group for 16 young adults where she guides them on a journey towards self discovery to equip them to look at opportunities for employment in a focussed way. Thank you Errin, your contribution means so much to us.



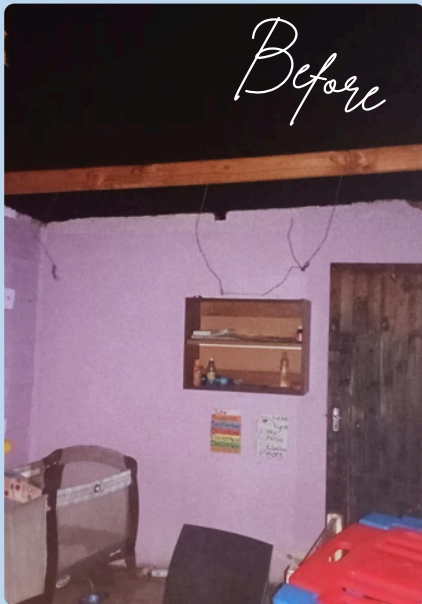
March 2024

FUNDISA EARLY CHILDHOOD DEVELOPMENT

Kamcare's Fundisa Program has 4 goals.

1. Development and Education of nursery school teachers.
2. Providing healthy food and supplements for all children registered on the program.
3. Provision of educational toys and stationery.
4. Renovation, building and equipping of nursery schools.

During November and December 2023 Kamcare renovated another nursery school in Refilwe, replacing the roof after a storm had blown it off. See the before and after photos. At this point we would like to thank our main sponsor Cavalier, as well as Butterfly Foundation who sponsored the roof for one classroom.



EDUCATIONAL CRATES

Most classes in the nursery schools where we work have no educational toys or stationery. Here we are talking about paint, scissors, crayons, play dough etc. School fees are used to pay for food, gas and salaries. During our training sessions we train the teachers to use the contents of the crates which are then donated to the nursery schools.

On the 29th November 2023, 28 crates were distributed to schools in Refilwe and on 30th November 2023, 20 were distributed to schools in Kameeldrif. Many thanks go to Beeld Childrens' Fund, Cavalier and Butterfly Foundation for sponsoring these crates.



Kameeldrif



Refilwe

A RE BALE “LET US READ”

Kamcare’s A re Bale reading program has started early this year. 50 Grade R pupils in the local informal settlements are being taught to read in English. This program uses the Reading Eggs online reading program. We have been using this program since 2014 with great success. The enrolment of the pupils on this program places their school career on an accelerated track and increases their chances of success at school and after school.

With the Grade R pupils we focus beyond just reading to include the spoken pronunciation of the English words they hear, how to communicate in English, eye-hand coordination, concentrating for the full session and following the class rules.

We begin each year with mouse training. Mouse training consists of exposing the pupils to the use of a mouse. This may sound like an unnecessary step but we have found it to be cardinal to the children’s’ successful use of the school computers. Hand eye coordination is important here.





DIE POORT SANDWICHES

At the beginning of the year we appealed for volunteers to help us with making sandwiches for the needy children at Die Poort Primary School.

We are so grateful to be able to report that there are currently 17 volunteers making sandwiches for approximately 34 children. It can be a thankless task but it makes such a huge difference. Sincere thanks to everyone!

FOOD PARCELS



In the last 4 months we have distributed 49 parcels to 101 needy people. Sincere thanks to everyone who donates food to us to make up the parcels.

March 2024

TAX BENEFITS . . A WIN WIN COMBINATION

The South African Revenue Services (SARS) has granted tax deductible status to Kamcare in respect of donations received which are used for article 18(A) approved public benefit activities. This gives an individual or organisation who makes a donation to Kamcare a tax advantage. In short this means that if you make a donation to Kamcare it can be deducted from your taxable income that will reduce your income tax. The deduction is limited to 10% of the tax payer's taxable income (excluding single amount pension income) before any deductions under Article 18(A) are applied.

This deduction status is rare these days for any organisation. Kamcare has shown that our internal and financial management is of such a level that you can trust us with your donation and be assured that it will be used for the purposed for which it was donated. Please feel free to contact Liezel on 072 150 3994 to discuss this.



GREETINGS FROM THE KAMCARE TEAM

